

CLSA WEBINAR SERIES

Accessing linked CLSA data at HDRN Canada data centres

January 17, 2024 | 12 PM ET

With presentations by:



Andrew Costa
Associate Scientific Director
Canadian Longitudinal Study on Aging



Sophie Hogeveen
Data Linkage Coordinator
Canadian Longitudinal Study on Aging



Carmen La
Program Specialist
Data Access Support Hub (DASH) for the
Health Data Research Network (HDRN)



Lindsey Gilbert
Data Services Manager
New Brunswick Institute of Research,
Data, and Training (NB-IRDT)



Réseau de recherche sur les données de santé du Canada
Health Data Research Network Canada



clsa élcv Canadian Longitudinal Study on Aging
Étude longitudinale canadienne sur le vieillissement

Meeting Agenda

1. Overview of CLSA's national dataset
2. Overview of HDRN Canada/DASH
3. Linked data availability and timeline
4. DASH process for accessing linked data
5. Single site experience with HDRN-CLSA data sharing project



1) Overview of CLSA's national dataset



What is the Canadian Longitudinal Study on Aging (CLSA)?

A research platform –
Infrastructure to enable
state-of-the-art, interdisciplinary
population-based **research**
and **evidenced-based**
decision-making that will lead
to better health and quality of
life for Canadians.



CLSA: Key facts

- Major strategic initiative of CIHR; on Canadian research agenda since 2001
- More than 160 researchers and collaborators – 26 institutions
- Multidisciplinary – biology, genetics, medicine, psychology, sociology, demography, economics, epidemiology, nutrition, health services
- Largest research platform of its kind in Canada for breadth & depth
- Following 50,000+ Canadians aged 45-85 at baseline for 20 years



Terminology

- **Tracking Cohort**

- Target - 20,000 participants from all 10 provinces, followed through Computer-Assisted Telephone Interviews (60 minutes at baseline)
- **21,241 recruited**

- **Comprehensive Cohort**

- Target - 30,000 participants living within 25 km (or 50 km) of a CLSA Data Collection Site (DCS)
- Followed through in-home interviews (60 minutes) and physical assessments (2-3 hours) at a DCS
- **30,097 recruited**



CLSA Research Platform

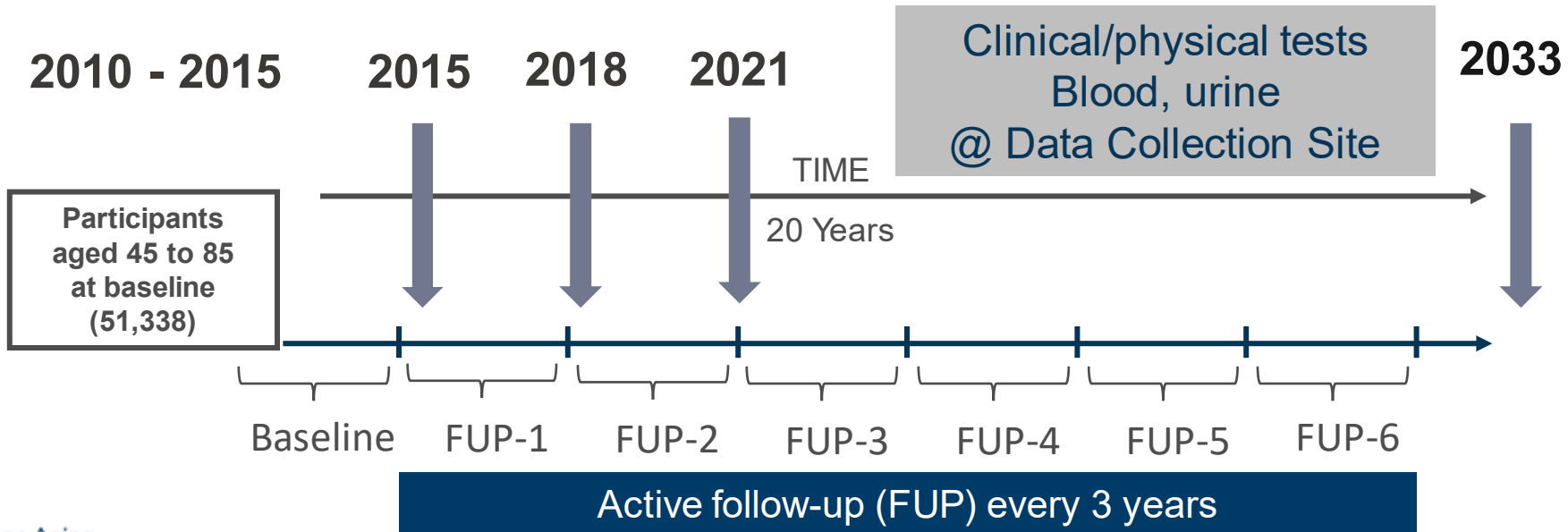
50,000 participants aged 45 - 85 at baseline

Target: 20,000
Actual: 21,241
Randomly selected within
provinces

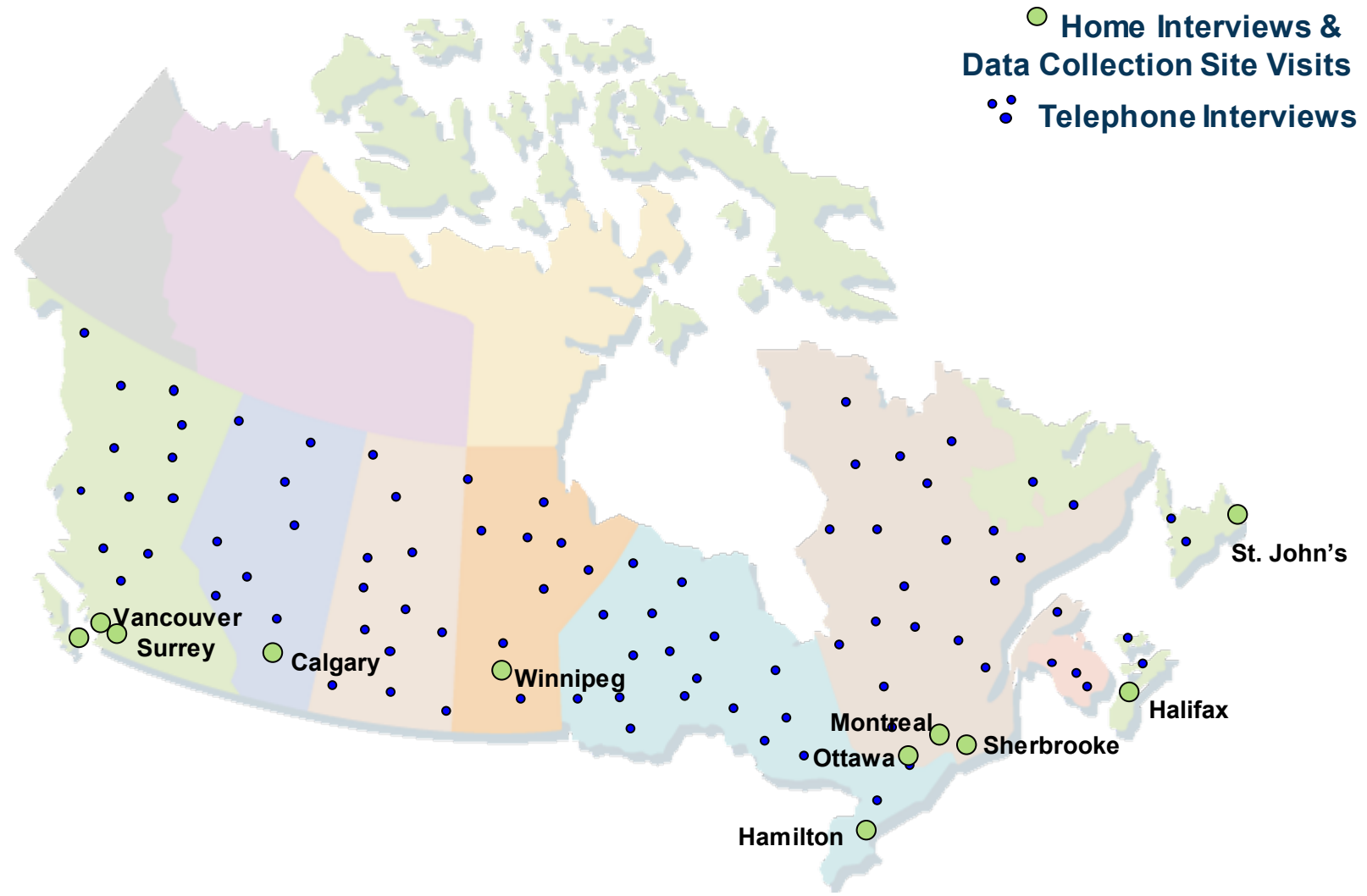
Target: 30,000
Actual: 30,097
Randomly selected
within 25-50 km of 11 sites

Questionnaire
By telephone (CATI)

Questionnaire
In person, in home (CAPI)



National Scope



What data are available?

- Information on the changing biological, medical, psychological, social, lifestyle and economic aspects of people's lives.
- These factors may be studied to understand the impact in both maintaining health and in the development of disease and disability as people age.
- Data collection is conducted through telephone and in-home interviews, as well as during visits to Data Collection Sites (DCS).



Data Resources

- Website: <https://www.clsa-elcv.ca/>
- Data Support Documentation: <https://www.clsa-elcv.ca/researchers/data-support-documentation>
 - Data Collection Tools
 - Data Dictionaries
 - Sampling Weights Documents
 - Derived Variables Documents
 - Other data support materials



A screenshot of the CLSA website's 'Researchers' page. The page header includes the CLSA logo and the text 'Canadian Longitudinal Study on Aging / Étude longitudinale canadienne sur le vieillissement'. A navigation bar at the top right contains 'Font Size + -' and 'Language'. Below the navigation bar, the 'Researchers' menu item is highlighted with a green circle. The main content area is titled 'Researchers' and contains a list of links: 'Protocols', 'Data Collection', 'Physical Assessments', 'Data Support Documentation', 'Approved Project Summaries', 'CLSA COVID-19 Studies', 'Data Access', and 'Research Opportunities'. To the right of this list, there is a section titled 'Researchers' with a paragraph of text and a sub-section titled 'Protocols' with three links: 'CLSA Protocol – Executive Summary', 'CLSA Protocol – Full Study Design and Baseline (2008)', and 'CLSA Protocol – First Follow-up (2015)'. A second paragraph of text follows, discussing the protocols listed.



Researchers
Protocols
Data Collection
Physical Assessments
Data Support Documentation
Approved Project Summaries
CLSA COVID-19 Studies
Data Access
Research Opportunities

Researchers

The CLSA provides documents online to facilitate understanding and managing the data.

Protocols

- [CLSA Protocol – Executive Summary](#)
- [CLSA Protocol – Full Study Design and Baseline \(2008\)](#)
- [CLSA Protocol – First Follow-up \(2015\)](#)

The protocols listed are based on the applications CLSA submitted. As the CLSA data collection progresses, occasionally, some updated versions of the protocols will be posted as necessary. Updated versions of the protocols will be posted as necessary. Please refer to the Data Collection Tools section to review the specific questions and answers for each phase of the study.

CLSA

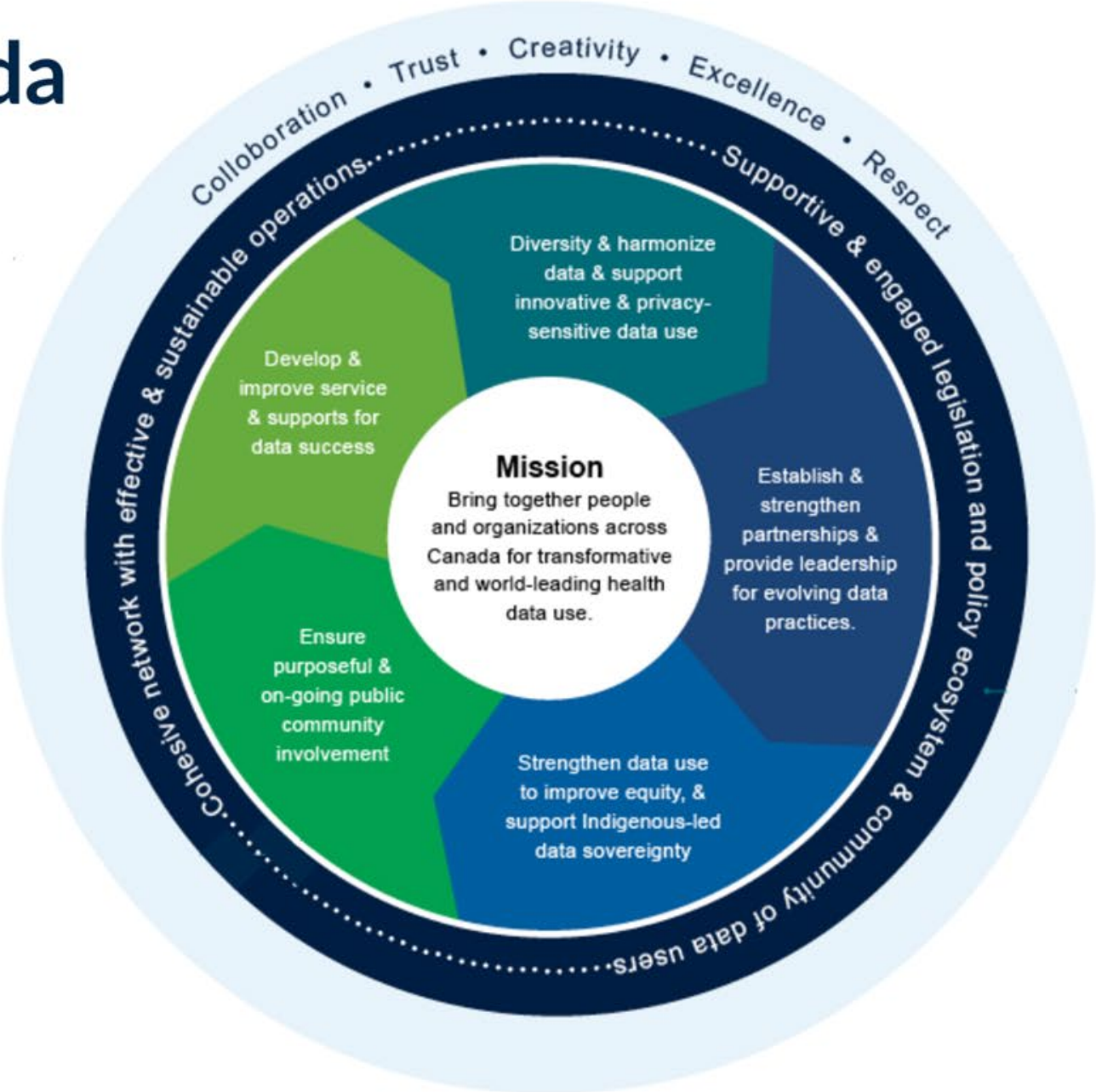


**HDRN
Canada**

2) Overview of HDRN Canada/DASH



HDRN Canada Strategic Framework



Canadian Longitudinal Study on Aging
Étude longitudinale canadienne sur le vieillissement



Data Access Support Hub (DASH)

DASH is a service for researchers conducting multi-regional research

- Service provided by a coordination team of representatives from 13 data centres across Canada
- Facilitate data access in provincial/territorial and pan-Canadian data centres and help navigate local requirements
- DASH does not hold data; data resides at the data centres



HDRN Canada Members



Statistics Canada

Statistique Canada



Canadian Longitudinal Study on Aging
Étude longitudinale canadienne sur le vieillissement

Data Access Support Hub (DASH)

DASH simplifies the data access process by:

- Providing **navigational support and coordination** throughout data access request process
- Offering **centralized resources and tools**
- **Harmonizing** aspects of **data access processes** across data centres
- **Integrating technological solutions** to streamline and progressively automate the DASH data access request process



3) Linked data availability and timeline



Data Centre Status

BC	AB	SK	MB	ON	QC	NB	NS	NL	PEI
									

 CLSA data available for request **by January 2024.**

 CLSA data sharing process **underway.**

 CLSA data sharing process has **not started.**

Two routes

Multi-region
linked data
through DASH



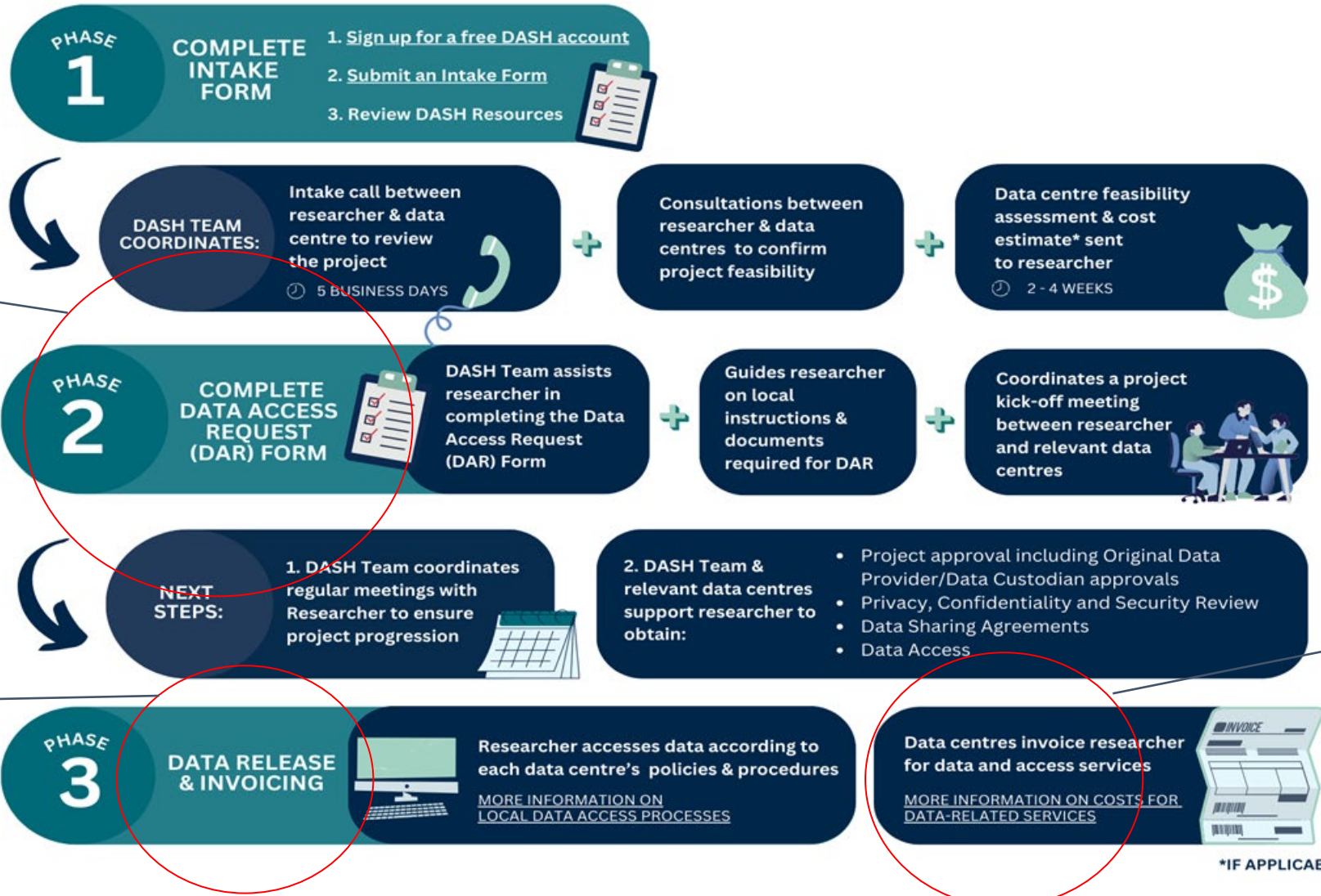
Single-region
linked data
directly through
data centre



4) DASH process for accessing linked data



DASH Process Overview



CLSA has 14 calendar days to reject/rescind approval.

Requestor must review the CLSA Data User Responsibility checklist.

McMaster University will issue invoice to requestor on behalf of CLSA.



Innovative Resources

- **Data Assets Inventory** (<https://www.hdrn.ca/en/dash/inventory/>)
 - **Administrative data** (hospitalization, drug claims, etc.)
 - **Clinical data** (electronic medical records, etc.)
 - **Social data** (education and immigration, etc.)
- **Algorithm Inventory** (<https://www.hdrn.ca/en/dash/algorithms/>)
- **COVID-19 Data Inventory** (<https://www.hdrn.ca/en/dash/covid/>)
- **Informed Consent** (<https://www.hdrn.ca/en/dash/resources/informed-consent/>)
- **Privacy Checklists** (<https://www.hdrn.ca/en/dash/resources/privacy/>)
- **Web portal for centralized forms & tools**

Centralized Tools

DASH web portal integrates forms that are required throughout the data access process



Project information,
services requested,
sites of interest

Data requirements,
cohort details, data
extraction and
analysis plan

Project information,
ethics, data analysis,
access and control

Supporting documents

Interested in working with DASH?

COMPLETE INTAKE FORM

1. Sign up for a free DASH account
2. Submit an Intake Form
3. Review DASH Resources



DASH TEAM COORDINATES:

Intake call between researcher & data centre to review the project



Data centre feasibility assessment & cost estimate sent to researcher

🕒 2 - 4 WEEKS



5) Single site experience with HDRN-CLSA data sharing project



HDRN-CLSA data sharing: NB-IRDT's experience

- Project planning and completion were truly collaborative
- Learned from similarities and differences between organizations
- Consistent standing meetings with a focus on action items kept us moving forward



Helpful lessons learned

- Always include plenty of time for legal review in project timelines
- Appoint a key point of contact for each organization
- Map out data flows in advance
- Share key processes
- Check for common understanding of terminology
- Every organization's procedure details do not need to be identical



Collaborative for Health & Aging

Contact:
linkage_lien@clsa-elcv.ca

CLSA is funded by the Government of Canada through CIHR and CFI, and provincial governments and universities

With special thanks to the McMaster Collaborative for Health and Aging, and their funder, the Ontario Strategy for Patient-Oriented Research (SPOR) Support Unit, which supported early work in Ontario



Canadian Longitudinal Study on Aging
Étude longitudinale canadienne sur le vieillissement

www.clsa-elcv.ca
